

LOCAL UPDATES

- The District of Invermere will open its offices to the public on Monday, June 8th. A reminder to use phone or online options as much as possible to reduce the volume of traffic in the office as it cannot accommodate large volumes of people.
- The RDEK will be honouring March, April and May transit passes in the month of June on the Columbia Valley and Elk Valley Transit Systems.

NEW PROVINCIAL UPDATES

- There are 201 active cases of COVID-19 in BC.
- Of the 9 new cases announced today, four include epi-linked cases that have been included in the Island Health and Vancouver Coastal Health region case reporting. 'Epi-linked' means that public health investigations have shown that cases meet the case definition for COVID-19 but may not have been tested for a number of reasons. In future reports, new tested and epi-linked cases will be included as one number. The four epi-linked cases have all recovered.
- There has been one new community outbreak with three confirmed cases at the Beresford Warming Centre, a shelter in the Fraser Health region. Public health teams are providing support at the site and for the other seven ongoing community outbreaks.
- There have been no new health-care outbreaks. In total, six long-term care or assisted-living facilities continue to have active outbreaks.

Links:

- COVID-19 Update: <https://news.gov.bc.ca/releases/2020HLTH0031-001020>

NEW FEDERAL UPDATES

- Seniors eligible for the Old Age Security (OAS) pension and the Guaranteed Income Supplement (GIS) will receive their special one-time, tax-free payment the week of July 6.
- Seniors eligible for the OAS pension will receive a payment of \$300, and those also eligible for the GIS will receive an additional \$200, for a total of \$500. Allowance recipients will also receive \$500.
- The federal government has issued an expression of interest under the Enabling Accessibility Fund youth innovation component to encourage youth aged 15-30 to volunteer and collaborate with local community-based organizations, and apply for funding of up to \$10,000 for accessibility projects.

Links:

- Seniors Benefits Payment: <https://pm.gc.ca/en/news/news-releases/2020/06/04/canadian-seniors-receive-special-payment-early-july>

Current Situation in BC

(as of 3:00pm PDT June 4, 2020)

Cases:

- Total confirmed cases in BC (since January): 2,632
- New cases since June 3: 9
- Hospitalized cases: 2
- Intensive Care: 6
- COVID-19 related deaths: 166 (no new)
- Recovered: 2,265
- Long term care/assisted living homes affected: 6
- Acute-care unit outbreaks: 0

Confirmed cases by region:

- Vancouver Coastal Health: 909 (no new)
- Fraser Health: 1,334
- Island Health: 130
- Interior Health: 195 (no new)
- Northern Health: 64 (no new)

News release:

<https://news.gov.bc.ca/releases/2020HLTH0031-001020>

BC MODELING SHOWS DECLINE IN CASES

- The Province provided its updated modeling today (see page 2 for more highlights), including more geographically specific numbers.
- **The East Kootenay has had 18 total test positive cases since the outset of the pandemic and has had no new cases in the past 14 days.**
- The number of cases have dropped across the Province, although Fraser Health Authority remains more active.
- The majority of cases in BC have occurred between people 30-60 years of age.
- BC is projecting a continued decline in transmission due to ongoing physical distancing measures.
- In order for transmission to remain low, it is critically important for people to self-isolate if they are sick.
- Moving forward, BC's approach is to 'minimize, manage and modify': minimize the number of new cases, manage cases and clusters with rapid contact tracing, and modify our measures as needed.
- The BC Centre for Disease Control has released genomic epidemiology, which is leading edge work to help BC understand where the virus comes from. Changes in the genetic pattern help experts determine where the virus may have originated before coming into BC.

Link to June 4 Modelling: https://news.gov.bc.ca/files/June4_Covid19_ForSplitScreen_V8.pdf

Link to BC Restart Plan:

- <https://www2.gov.bc.ca/gov/content/safety/emergency-preparedness-response-recovery/covid-19-provincial-support/bc-restart-plan>

Important Phone Numbers:

- **1-888-COVID19 (1-888-268-4319)**. The line is for non-health COVID-19 information.
- **811** - for health related information on COVID-19
- **211** - seniors looking for help (or volunteers willing to help), can call 211 or visit: <http://www.bc211.ca/>
- **Crisis Line: 1.888.353.2273**
- **Kids Help Phone: 1-800-668-6868**

Online Links:

- **COVID-19 Self Assessment Tool & App** - use this online tool to complete a self-assessment & get updates.
- **BC Centre for Disease Control** - includes information on their testing protocols.
- **Interior Health** - links to the latest Interior Health information.
- **Government of Canada** - statistics, travel info and economic and financial supports available federally.
- **Province of BC Information Hub** - links to Provincial supports for non-health information

COVID-19

REGIONAL SNAPSHOT | JUNE 4, 2020

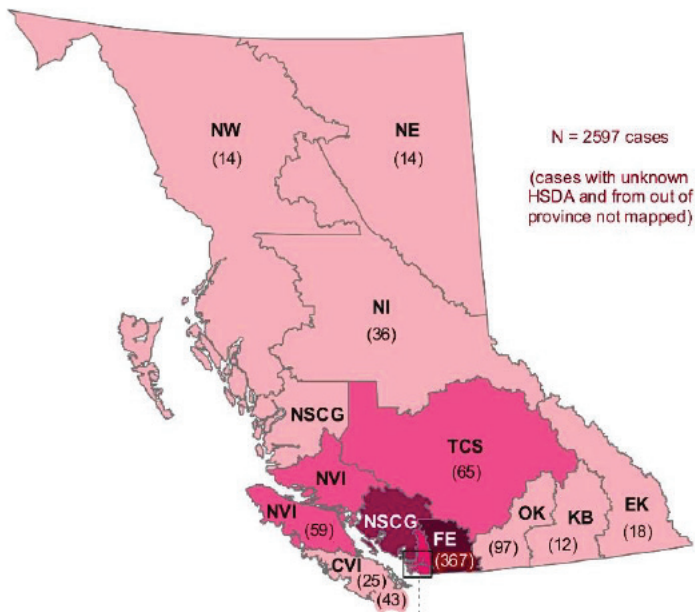
BC MODELING CONTINUED

- British Columbians are currently between 30% and 40% of their pre-Covid contacts, and can slowly get to 50%-60% without negatively impacting transmission rates.
- While early cases in BC came from China, cases from Europe, Eastern Canada and Washington were the predominant sources in BC.
- The data presented June 4 will inform BC's direction moving forward and will continue to be updated and inform future phases in the BC Restart in BC.

Link to June 4 Modelling: https://news.gov.bc.ca/files/June4_Covid19_ForSplitScreen_V8.pdf

GEOGRAPHIC BREAKDOWN IN BC

Cumulative total: reported January 22 to May 31, 2020

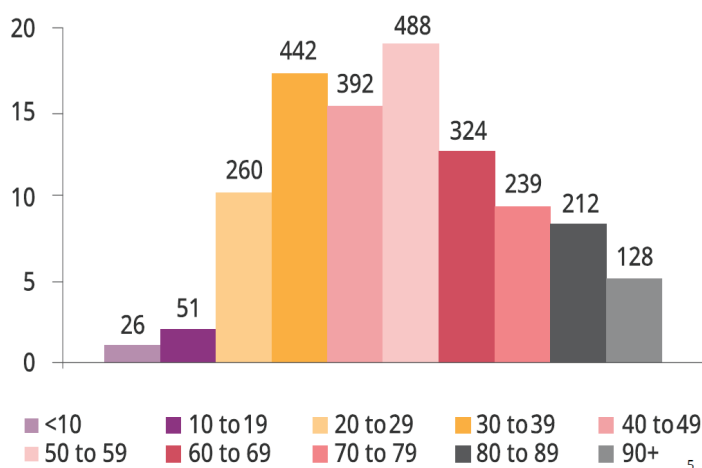


FEDERAL MODELING HIGHLIGHTS



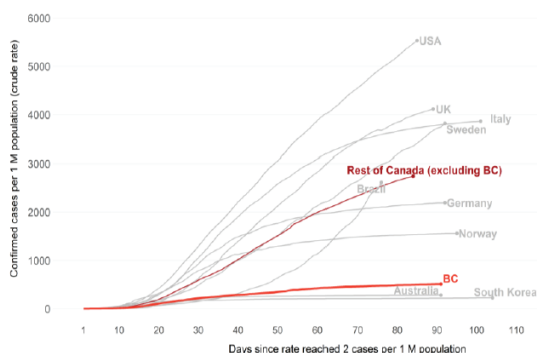
- As the virus trends downward across much of Canada, Quebec and Ontario account for 90% of the national positive case count in the past 14 days.
- Canada could see between 97,990 and 107,454 cases and between 7,700 and 9,400 deaths by June 15.
- Across the country, 18% of cases occurred in long-term care and seniors' homes, but account for 82% of deaths illustrating how vulnerable seniors are to this virus.
- Health Canada data shows that more than 8,700 people have been hospitalized, and of those more than 1,700 have been admitted to an intensive care unit over the course of the disease's spread across Canada.
- As of 7:00pm EDT, 1,791,106 Canadians have been tested, with 93,715 testing positive and 7,637 deaths.

BREAKDOWN OF BC CASES BY AGE

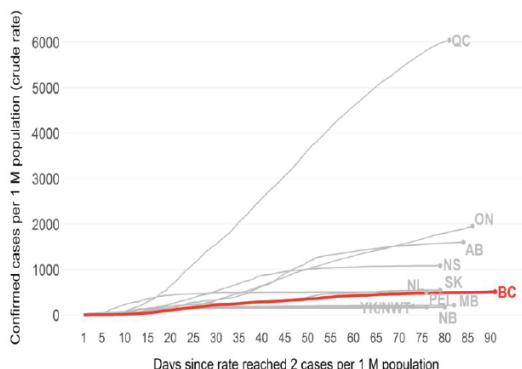


BC CASE RATE COMPARISON TO OTHER COUNTRIES & OTHER PROVINCES

International Case Rates Comparison:
Cumulative diagnosed COVID-19 case rates by select countries vs BC and rest of Canada.



National Case Rates Comparison:
Cumulative diagnosed COVID-19 case rates by Canadian provinces.



GRAPHING TO SHOW NEGATIVE EFFECT ON TRANSMISSION IF WE EXCEED 60% CONTACT RATE

