

CROSSROADS REGIONAL BALL PARK

Crossroads Ball Park is located in Windermere at the crossroads behind the Chamber of Commerce.

AMENITIES INCLUDE: parking, four ball diamonds, spectator stands, dugouts and wheelchair accessible outhouse facilities.



WYCLIFFE EXHIBITION GROUNDS

Wycliffe Exhibition Grounds is 23 hectares and has been operated and maintained by the RDEK since 2010. Events held at the grounds include various riding clubs' practices and events, 4H Show and Sale, annual Cranbrook Pro Rodeo and weddings. Wycliffe Exhibition Grounds is located on Wycliffe Park Road, between Cranbrook and Kimberley.

AMENITIES INCLUDE: an outdoor riding arena, announcer's booth, spectator stands, multiple pens and stalls for livestock, a washhouse (wheelchair accessible washroom facilities and a shower), the Artha Rose Centre (meeting rooms, washroom facilities, full kitchen with grill, walk-in freezer and fridge), dressage ring, mountain and cross-country trails, the Henderson Building (large enclosed pavilion with side building), multiple outhouse facilities, and lots of parking.

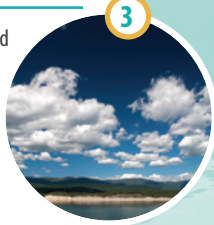


YAQAKXAQŁAMKI REGIONAL PARK
(KOOCANUSA BOAT LAUNCH)

Yaqakxaqłamki Regional Park (Koocanusa Boat Launch) opened on July 1, 2011. The launch was built through funding from Teck, BC Hydro and the Columbia Basin Trust. The boat launch season opening and closure dates vary depending on water levels. Koocanusa Boat Launch is located on the north side of Kikomun Newgate Road; on the west side of Koocanusa Lake.

AMENITIES INCLUDE: boat launch with floating docks, parking for vehicles with trailers, overflow parking for vehicles with no trailers and wheelchair accessible outhouse facilities.

SEASONAL OPERATION typically from June – October



DAWSON'S PATH

This 2.4 kilometre trail along the Jaffray-Baynes Lake Road has been constructed in memory of a young Jaffray boy who was killed in a tragic collision.

The gravel trail begins in the community of Jaffray and parallels the east side of the Jaffray-Baynes Lake Road until it reaches Sand Creek. Designated for walkers and cyclists, it provides a safe alternative route.



FAIRMONT PATH

Fairmont Path is a paved trail that when completed will extend from Fairmont Hot Springs core commercial area at the intersection Fairmont Resort Road south to the Fairmont Hot Springs Fire Hall. This project was initiated by the Fairmont Community Association and will provide a safe alternative to walking along highway 93/95. Phase one has been completed (from the intersection of Fairmont Resort Road and Hot Springs Road, south along Hot Springs Road to the intersection with Columbia River Road). Phase two will see the trail completed to the Fairmont Hot Springs Fire Hall. There is potential for the trail to one day connect to the Westside Legacy trail terminus south of Fairmont Hot Springs.



OLD COACH GREENWAY

Old Coach Greenway is a well marked, nine-kilometre trail that follows the historic Old Coach Road from Dry Gulch north to the Village of Radium Hot Springs. Open for non-motorized use only, the trail winds its way through dry fir forests and along open grassland benches. The trail boasts of many spectacular viewpoints overlooking the Columbia River Wetlands and has interpretive stops of interest along the way.

Trail enthusiasts can access the trail from the south near Dry Gulch, at a large parking area across the highway from Eacrett Road or from the north in Radium at the corner of Edelweiss Street and East Main.



MARKIN-MACPHAIL
WESTSIDE LEGACY TRAIL

Westside Legacy Trail is a non-motorized paved trail from Invermere to Fairmont and was designated as a Regional Park in November 2015. It is located primarily on private lands and within the Ministry of Transportation and Infrastructure right-of-ways. The north trail terminus and parking lot are located south of Invermere on Westside Road, which includes a paved 2.7 km section along Goldie Creek. The south trail terminus is located on Highway 95 near the Westside Road north turnoff.



EDGEWATER SCHOOL PATH

Edgewater School Path was created as an Electoral Area G Park in 2015. It is located in the road right of way adjacent to the north bound lane of Sinclair Street. The 250m path is the main path to the Edgewater Elementary School.



WELCOME TO OUR PARKS,
TRAILS & RECREATION FACILITIES.

*We hope you enjoy the natural beauty
and activities they provide.*

The Regional District of East Kootenay (RDEK) parks system dates back to the early 1970's when the RDEK acquired crown land at Wycliffe and Tie Lake for development as public parks.

Others have been added over the years and today we have a number of parks, trails and recreation facilities for the public to enjoy. Amenities include sports fields, disc golf, bocce pits, horseshoe pits, hiking trails, beaches, picnic areas, fire pits, lake accesses, ball diamonds and boat launches. RDEK parks, trails and recreation facilities have something for everyone.

All RDEK parks, trails and recreation facilities are day use only and are open from dawn 'til dusk.

To ensure an enjoyable experience by all visitors and to maintain the natural beauty at all RDEK parks, trails and recreation facilities, please "Pack It In, Pack It Out" and remove all of your garbage.

This year, discover the beauty of your regional parks, trails and recreation facilities. Visit them all and enjoy all they have to offer!

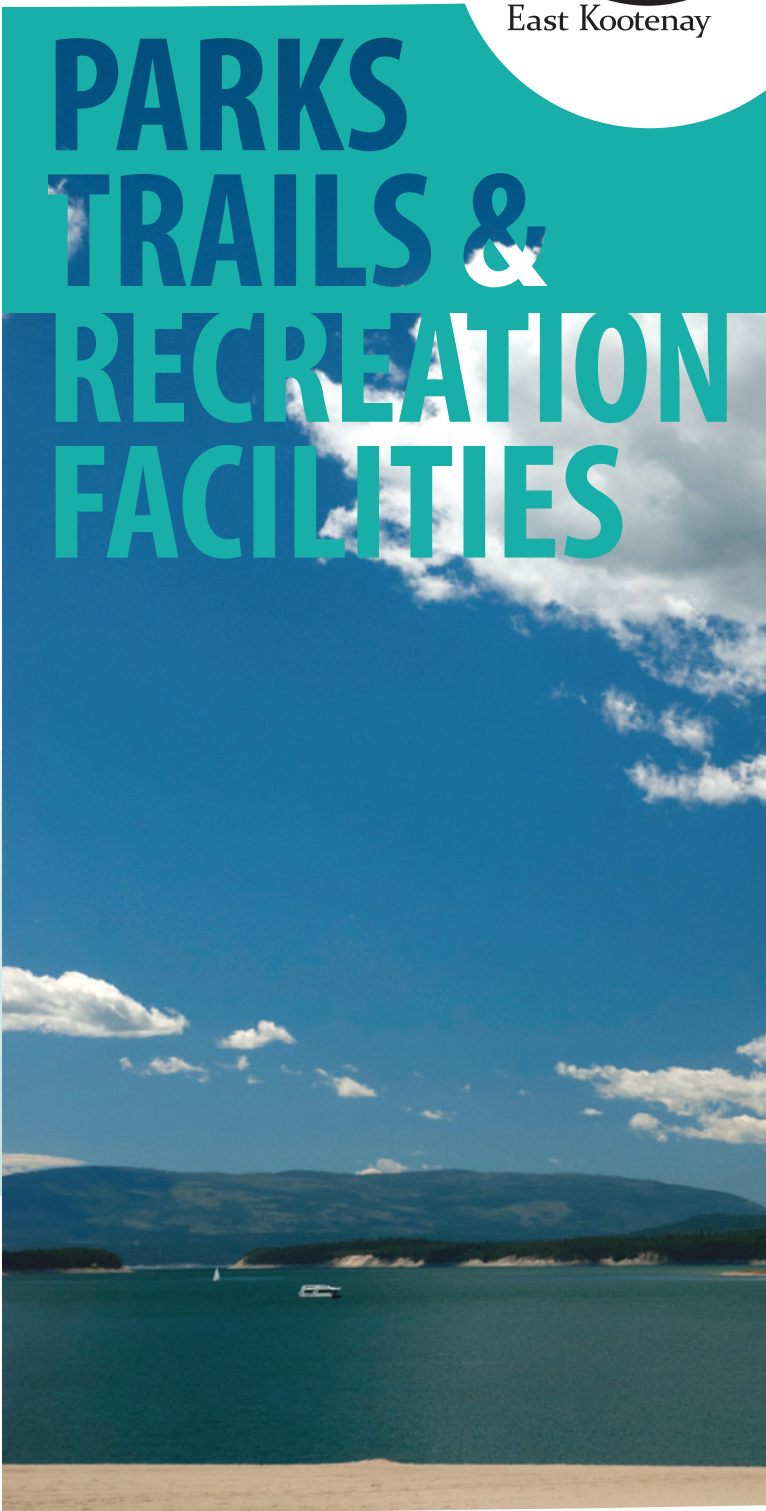
FOR MORE INFORMATION CONTACT:

The Regional District of East Kootenay
19-24th Avenue South
Cranbrook, BC V1C 3H8

250-489-2791 | www.rdek.bc.ca



PARKS
TRAILS &
RECREATION
FACILITIES



PARKS

WYCLIFFE REGIONAL PARK

The showpiece of the RDEK's parks system, Wycliffe Regional Park is located on Perry Creek Road between Cranbrook and Kimberley.

At 164 hectares, its large size and many facilities make this park an excellent venue for large group events like family reunions, baseball and disc golf tournaments or a good old-fashioned company picnic.

AMENITIES INCLUDE: parking, several picnic areas and shelters, hiking trails, fire pits, sports fields, baseball diamonds, 18-hole disc golf course, horseshoe and bocce pits and wheelchair accessible outhouse facilities.

SEASONAL OPERATION from April 15 – October 15

WILMER COMMUNITY PARK

Wilmer Community Park, commonly known as Selkirk Park, was designated as an Area G Park, in August 2015. It is located off Bullin Street and Mays Avenue.

AMENITIES INCLUDE: limited parking and a hiking trail.

ROSEN LAKE EAST & WEST ACCESSES

Two lake accesses are located on the east and west side of Rosen Lake. Follow Rosen Lake Road north from Highway 3 then go east or west at Rosen Lake to access the two sites.

AMENITIES AT EACH SITE INCLUDE: parking, small beaches, picnic tables and outhouse facilities.

TIE LAKE REGIONAL PARK

Tie Lake Regional Park is a 12 hectare park located seven kilometres north of Jaffray, at the end of Tie Lake Road. A sandy beach and plenty of trees for shade make this a great location for a family day at the lake.

AMENITIES INCLUDE: parking, beach and swimming area, several picnic areas, a picnic shelter, walking trails, fire pits, a baseball diamond, horseshoe and bocce pits and wheelchair accessible outhouse facilities.

SEASONAL OPERATION from May 1 – September 30

AVERY ROAD LAKE ACCESS

Avery Road Public Access is located just off Avery Road midway along the north side of St. Mary Lake and was created as an Area E Park in 2012.

AMENITIES INCLUDE: parking, lake access trail, small launch area for non-motorized boats and a bench.

WINDERMERE BEACH

On the east shore of Lake Windermere, Windermere Beach is a favourite summertime hangout for locals and tourists alike. It's the perfect getaway on a hot summer day. The beach is located at the end of Selkirk Street in the community of Windermere.

AMENITIES INCLUDE: parking, boat launch, beach, playground, picnic tables and wheelchair accessible washroom facilities.

CHERRY CREEK FALLS REGIONAL PARK

Cherry Creek Falls is a 14.5 hectare park that was designated as an Area E Park in October 2013. Driving to the park, take Highway 95A north from Kimberley and go north onto Thomason Road, then north onto Clarricoates Road.

AMENITIES INCLUDE: parking, hiking trails, picnic tables, a fire pit, benches and stairs to a viewing platform at the bottom of the waterfall.

ST. MARY LAKE REGIONAL PARK

St. Mary Lake Regional Park is located approximately 20 km west of Kimberley on St. Mary Road and is on the east end of St. Mary Lake. The park is open from dawn until 9 pm. In 2018, the RDEK signed a License of Occupation Agreement with the private landowner to operate and maintain the park.

AMENITIES INCLUDE: parking, picnic areas, boat launch, hiking trails and a wheelchair accessible outhouse.

SEASONAL OPERATION from May 15 – September 15

ALDRIDGE REGIONAL PARK

In the fall of 2013, Aldridge Park was formally created as an Area C Park. The park is comprised of two parcels, one linear parcel that runs for approximately 250 metres alongside Moyie River with two accesses from Braunagel Road; and an upland parcel with no amenities.

AMENITIES AT THE LOWER PARCEL INCLUDE: parking, small beach area, walking trail and a bench.

ELK VALLEY REGIONAL PARK

Elk Valley Regional Park is located along the east side of Highway 43, between Sparwood and Elkford. Nestled amongst the Rocky Mountains, the park is a great place for a family picnic, a barbecue with friends or a baseball game.

AMENITIES INCLUDE: parking, several picnic areas, a picnic shelter, hiking trails, fire pits, baseball diamond, sports fields, horseshoe and bocce pits and wheelchair accessible outhouse facilities.

SEASONAL OPERATION from May 1 – September 15

