

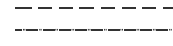





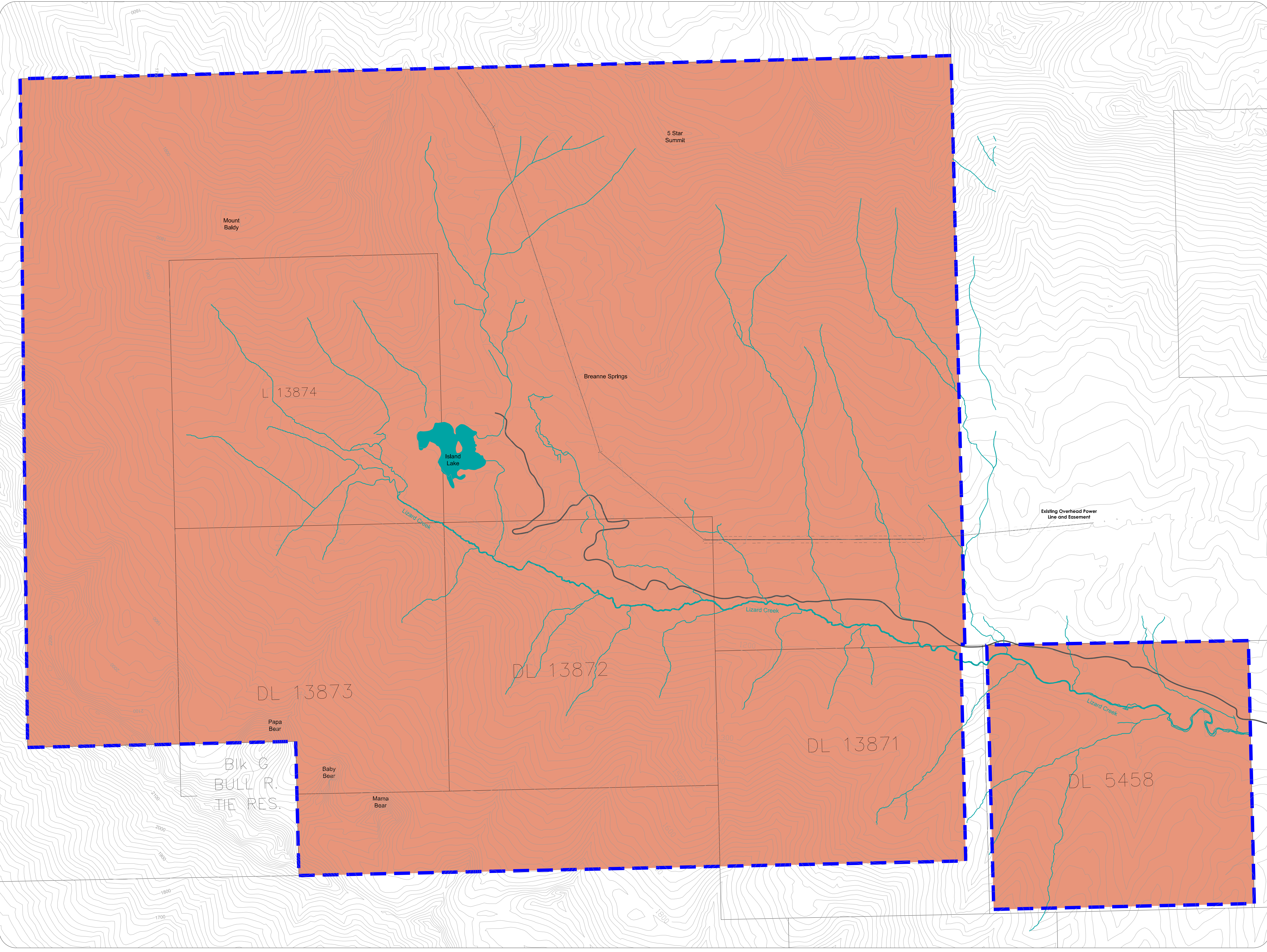


Legend

- Plan Area Boundary 
- Existing Access Road 
- Existing Overhead Power Line 
- Existing Hydrology 
- High 
- Moderate 
- Low 

SCALE IN METERS

For office use:

This is Schedule G of Bylaw No. 2170 cited as "Regional District of East Kootenay - Island Lake Resort Official Community Plan Bylaw No. 2170, 2009"

"David Wilks"
 Chair

"L.V Crane" May 7, 2010
 Corporate Officer Date

SCHEDULE
G
 Interface Fire Hazards