

REGIONAL DISTRICT OF EAST KOOTENAY

REGIONAL PARKS PLAN



Amended: October 4, 2019

Contents

SCHEDULE A – POLICIES	1
1.0 DEFINITIONS.....	1
2.0 BACKGROUND AND HISTORY	1
3.0 PURPOSE.....	2
4.0 REGIONAL PARKS SYSTEM GOALS	2
4.1 System Goals	2
4.2 Park Goals	2
4.3 Trail Goals	3
5.0 NEW PARKS AND TRAILS	3
5.1 General.....	3
5.2 Parks	3
5.3 Trails.....	4
6.0 FINANCIAL ADMINISTRATION.....	4
6.1 Regional Parks Service Funding	4
6.2 Reserve and Park Land Acquisition Funds	4
6.3 Provision of Park Land During Subdivision.....	4
6.4 User Charges.....	5
7.0 REGIONAL PARKS ADMINISTRATION.....	5
7.1 Park and Trail Management Plans	5
7.2 Facility Standards	5
7.3 Regulations.....	6
7.4 Appropriate Use.....	6
7.5 Staffing and Resources.....	6
7.6 Volunteers and Partnerships	6
8.0 PLAN REVIEW AND AMENDMENT	7
SCHEDULE B – REGIONAL PARKS AND TRAILS	8

Amendments

NO. & DATE	SECTION AMENDED
1 – Apr 1/05	Schedule B3.1 & B6.1 Added
2 – Sep 5/08	Schedule B3.1 Amended
3 – May 1/09	Schedule B6.2 Crossroad Regional Ball Park Added
4 – Dec 4/09	Schedule B3.2 Dawson's Path Added
5 – Jun 10/11	Schedule B1.5 Yaqakxaqlamki Added
6 – Sep 10/12	Schedule B5.1 Avery Road Public Access Added
7 – Oct 4/13	Schedule B4.1 Aldridge Regional Park Added
8 – Oct 4/13	Schedule B5.2 Cherry Creek Falls Regional Park Added
9 – April 4/14	Schedule B2.2 Repealed
10 – Oct 2/15	Schedule B7.1 Wilmer Community Park Added
11 – Nov 6/15	Schedule B1.6 Westside Legacy Trail Added
12 – March 4/16	Schedule B1.4 Repealed and Substituted with B1.4.1 and B1.4.2
13 – July 8/16	Schedule B7.2 Edgewater School Path Added
14 – Jan 5/18	Schedule B6.3 Fairmont Path Added
15 – Feb 9/18	Schedule B2.1 Repealed
16 – Oct 4/19	Schedule B3.3 Waldo Cove Regional Park Added
17 – Oct 4/19	Schedule B5.3 St. Mary Lake Regional Park Added

SCHEDULE A – POLICIES

1.0 DEFINITIONS

Board means the Board of the Regional District of East Kootenay.

Official Community Plan means an RDEK Official Community Plan Bylaw adopted under s876 of the *Local Government Act* and includes RDEK Official Settlement Plans and the policy sections of RDEK Land Use Bylaws.

RDEK means the Regional District of East Kootenay.

Regional Park means any park service established by the RDEK and unless otherwise specified includes regional trails.

2.0 BACKGROUND AND HISTORY

The provincial government granted the RDEK authority to establish a regional park function by supplementary Letters Patent in 1966. The RDEK now operates regional parks and trails under the authority of the *Local Government Act* (LGA). Bylaw No. 933 establishes the RDEK Regional Park Service.

In the early 1970s the RDEK began the development of its regional parks system after having acquired crown lands at Wycliffe and Tie Lake for development as park facilities. In 1975, a major study of potential regional park sites was undertaken by the RDEK but no formal park plan or implementation strategy was ever adopted. The present system of regional parks was completed in the mid-1980s with the inclusion of the Elk Valley and West Fernie Regional Parks. In 1990, the regional parks function was converted into an extended service for funding purposes.

The RDEK has received several requests to expand the regional parks system in recent years, particularly in the area of regional trails. In 2002, the Board agreed to add the Old Coach Greenway (Columbia Valley Regional Trail) to the system in order to address the absence of a regional park in the Columbia Valley subregion. However, other park and trail proposals have been subject to debate concerning financing. In 2004, the RDEK adopted Electoral Area Regional Parks and Trails Service Area Establishment Bylaws to simplify the financing of new parks and trails.

With these new regulatory tools in place to administer an expanding system, the need for a Regional Parks Plan has become more apparent. Principles and policies to guide the expansion, administration and financing of the regional parks system are the focus of this plan.

3.0 PURPOSE

The purpose of the Regional Parks Plan is fivefold:

1. To determine the goals and objectives of the RDEK's regional park and trail system.
2. To set criteria for considering additions to the regional parks and trail system, including how they will be financed.
3. To establish policy for the RDEK's administration of park land or cash-in-lieu from a developer at the time of subdivision, as provided for in the LGA.
4. To initiate standards for the regulation, administration and operation of park and trail facilities.
5. To identify existing park and trail services and their funding mechanism.

4.0 REGIONAL PARKS SYSTEM GOALS

4.1 System Goals

- (a) To develop a system of park and trail facilities that provides a variety of publicly accessible day use passive and active recreational amenities for the region.
- (b) To facilitate public access to other recreational amenities such as local lakes, rivers, or other regionally significant cultural or natural resources.
- (c) To operate and maintain the system in accordance with the standards that are set for each service or facility.
- (d) To ensure that the costs of the system are distributed equitably amongst the benefiting electoral areas and municipalities.
- (e) Where applicable, to develop the system in accordance with the objectives and policies contained in Official Community Plans (OCP).

4.2 Park Goals

- (a) To manage as non-commercial day use recreational facilities for the enjoyment of area residents and the visiting public.
- (b) To manage primarily as areas for outdoor recreation purposes in either a natural, rural or urban setting. Regional parks are not intended to duplicate the protected area strategies of other levels of government or replace Forest Service recreation sites.
- (c) To offer a variety of park use opportunities.

4.3 Trail Goals

- (a) To encourage and develop inter-community trail linkages.
- (b) To provide corridors that facilitate outdoor recreational opportunities and promote alternative transportation initiatives.
- (c) To provide frontcountry trail linkages to other sites of regional importance such as extraordinary natural and cultural features. Regional Trails are not intended to manage new or existing backcountry recreation trails.
- (d) To manage primarily for summer (snowfree) non-motorized use.
- (e) To encourage coordination of Regional Trails with existing and proposed trail networks administered by other jurisdictions.

5.0 NEW PARKS AND TRAILS

Proposals for new parks or trails should meet the following criteria:

5.1 General

- (a) New proposals must meet Regional Park System Goals or be of exceptional individual merit.
- (b) Where an OCP is in effect, proposals should reflect the objectives and policies of that plan.
- (c) Where a rural land use bylaw or zoning bylaw is in effect, regional parks will be zoned accordingly.
- (d) Be an existing park or trail owned or administered by a member municipality that complements Regional Parks System Goals.

5.2 Parks

- (a) For park sites, title to the land must be held by the RDEK. In the case of crown land, a long term tenure reflecting the RDEK's exclusive or priority interest in the land is acceptable.
- (b) Park sites must provide sufficient opportunities for the development of day use recreational amenities.
- (c) Park proposals should not duplicate nearby facilities or compete with existing businesses.

5.3 Trails

- (a) Connect via a linear corridor two or more municipalities, rural communities, resorts or areas of significant natural or cultural interest.
- (b) Tenure for the trail route must be held by the RDEK either through direct ownership, crown land tenure, right of way easement, or by private permit.

6.0 FINANCIAL ADMINISTRATION

6.1 Regional Parks Service Funding

- (a) Three options exist for service funding:
 - 1. through the region wide extended service;
 - 2. as electoral area service areas; or,
 - 3. as local service areas.

Parks and trails of regional importance may be funded through the region wide service. Proposals that are subregional in focus may be funded as electoral area services with participation by adjacent municipalities, if applicable. Proposals that are even more local in nature, such as community halls or tot lots, or that are generated by virtue of an OCP, may require that a local service area be established.

- (b) New or revised OCPs that contain policies and designations regarding the type and location of future parks and trails will require that a service area be established to implement those policies if the RDEK is to be the service provider.

6.2 Reserve and Park Land Acquisition Funds

The RDEK may, at its discretion, build reserve funds for a particular service area. These funds would then be used to finance capital projects or park land acquisition within the service area in accordance with the policies and direction provided in the Regional Parks Plan, an OCP or a specific park or trail management plan.

6.3 Provision of Park Land During Subdivision

Under certain conditions, s941 of the LGA permits local government to acquire park land or cash-in-lieu from a developer at the time of subdivision. Opportunities under s941 will be managed as follows:

- (a) If the land to be subdivided is not within an OCP, then the RDEK will not ask for a park land dedication or accept cash-in-lieu. However, this does not prevent developers from dedicating park land, institutional or open space in their developments so long as an alternate form of land management is provided.

- (b) If the land to be subdivided is within an OCP, then
 - (i) That OCP must contain policies and designations regarding the type and location of future regional parks and have a separate service area established for the acquisition and administration of community parks and trails.
 - (ii) Park land or cash-in-lieu will be requested of the developer in accordance with the policies and designations contained in the OCP. Cash-in-lieu will be the default requirement.
- (c) Monies raised through s941 will be held in separate reserve accounts for each local service area for the purpose of acquiring regional parks and trails.

6.4 User Charges

To assist with the financing of the park system, revenue generating initiatives, such as user charges for group bookings of regional park facilities, may be implemented in the future.

7.0 REGIONAL PARKS ADMINISTRATION

7.1 Park and Trail Management Plans

- (a) Separate management plans will be prepared for regional parks and trails on an as required basis.
- (b) Management plans should address such topics as land acquisition, site planning, facility development, recreation, user groups, access management, public safety, maintenance, control of invasive weeds, threat from wildfire, funding and partnership agreements.
- (c) Parks with significant undeveloped natural areas will be managed in accordance with accepted land management practices.
- (d) Public input on management plans may be sought.
- (e) Each management plan will be approved by the Manager of Engineering and Environmental Services and adopted by Board resolution.

7.2 Facility Standards

- (a) All park and trail facilities will be designed and constructed so as to project an image that is distinct and appropriate to the RDEK.
- (b) All facilities will be designed, constructed and maintained to an acceptable public safety standard appropriate to that facility.
- (c) Standards for park and trail signage may be developed and implemented.

7.3 Regulations

- (a) Each park and trail will be subject to a regulatory bylaw specifying, among other things, appropriate use, enforcement and penalties.
- (b) Regional park users will be made aware of relevant rules and regulations through park signing and publications.

7.4 Appropriate Use

- (a) Commercial services and facilities will not be permitted in regional parks unless authorized as a special use activity in accordance with the RDEK's Special Events Bylaw No. 277.
- (b) The RDEK may close parks and trails and take other precautions as necessary in conjunction with BC Forest Service fire hazard ratings. Open fires will only be permitted in designated fire pits.
- (c) No camping or overnight use is permitted in any regional park, except as provided for by Board policy in special circumstances.
- (d) Day use recreational activities are generally acceptable in all regional parks, however, some recreational activities may be restricted because of the facilities they require or the impact to the natural environment. Regulatory bylaws or management plans will specify the activities restricted at each facility.
- (e) Activities that are considered inappropriate in regional parks include those that:
 - interfere with the enjoyment or activities of other visitors;
 - cause excessive noise;
 - involve the use of motorized equipment or vehicles;
 - cause a significant impact to the natural environment;
 - is prohibited by law, bylaw, regulation or restrictive covenant.

7.5 Staffing and Resources

The expansion of the regional park and trail system may require new resources including additional RDEK staff or maintenance contracts.

7.6 Volunteers and Partnerships

Opportunities for qualified community groups and organizations in the planning, maintenance and operation of RDEK park and trail services will be supported. Such relationships should be described in a partnership agreement that specifies the roles and responsibilities of each party.

8.0 PLAN REVIEW AND AMENDMENT

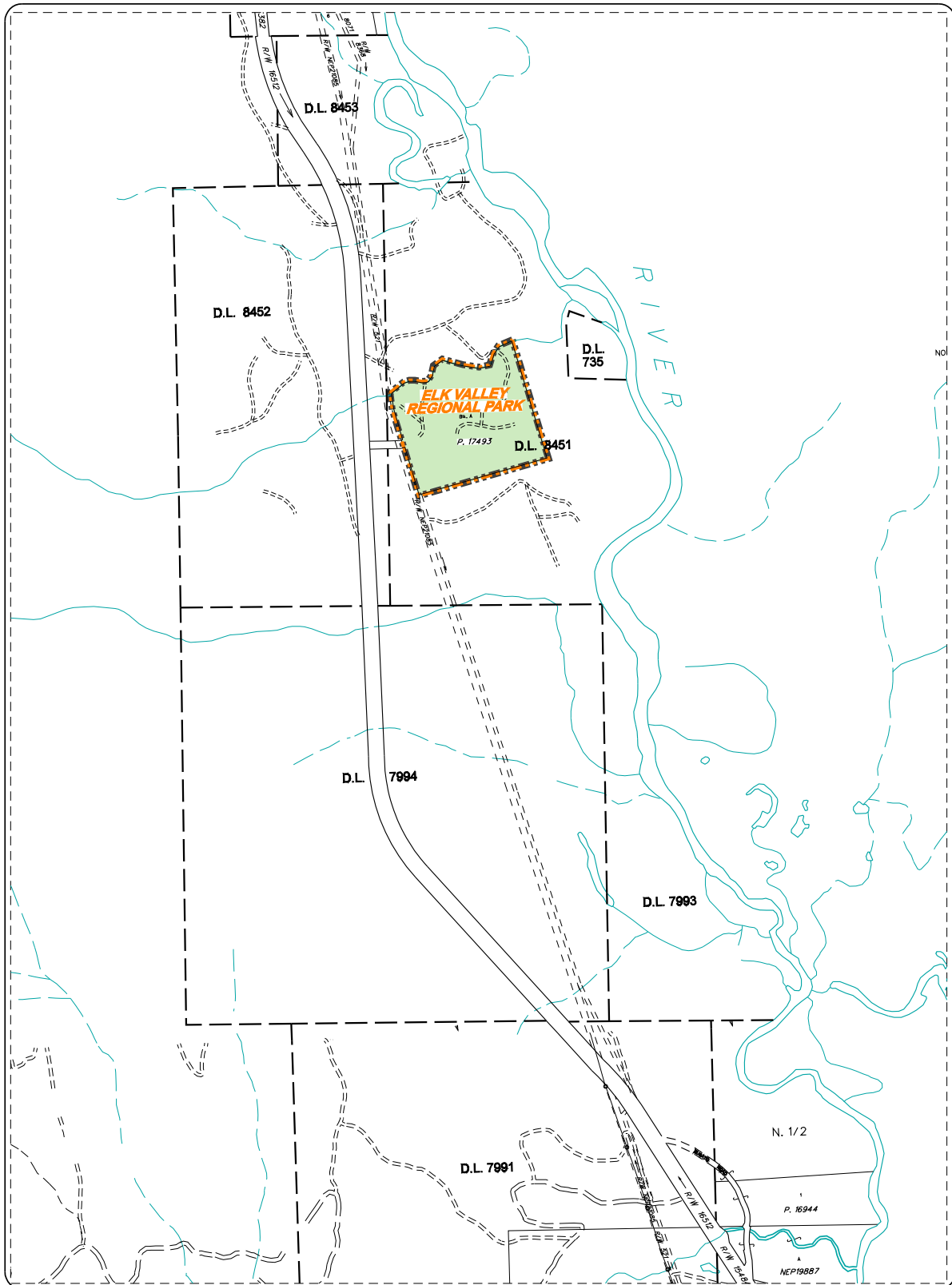
The goals and policies contained in this plan should be reviewed ever 5 years or as conditions warrant. When new parks or trails are added to the system, Schedule B of this plan will be amended to include the new service as a map schedule.

SCHEDULE B – REGIONAL PARKS AND TRAILS

1. Regional Parks and Trails funded under “Regional District of East Kootenay – Extended Service (Regional Parks) Area establishment Bylaw No. 933, 1990”.	B1.1	Elk Valley Regional Park
	B1.2	Tie Lake Regional Park
	B1.3	Wycliffe Regional Park
	B1.4.1 B1.4.2	Old Coach Greenway North Old Coach Greenway South
	B1.5	Yaqakxaqlamki
	B1.6	Westside Legacy Trail
2. Regional Parks and Trails funded under “Regional District of East Kootenay – Electoral Area A Regional Parks and Trails Service Establishment Bylaw No. 1729, 2004”.		
3. Regional Parks and Trails funded under “Regional District of East Kootenay – Electoral Area B Regional Parks and Trails Service Establishment Bylaw No. 1730, 2004”.	B3.1 B3.2 B3.3	Rosen Lake Public Accesses Dawson’s Path Waldo Cove Regional Park
4. Regional Parks and Trails funded under “Regional District of East Kootenay – Electoral Area C Regional Parks and Trails Service Establishment Bylaw No. 1731, 2004”.	B4.1	Aldridge Regional Park
5. Regional Parks and Trails funded under “Regional District of East Kootenay - Electoral Area E Regional Parks and Trails Service Establishment Bylaw No. 1751, 2004”.	B5.1 B5.2 B5.3	Avery Road Public Access Cherry Creek Falls Regional Park St. Mary Lake Regional Park
6. Regional Parks and Trails funded under “Regional District of East Kootenay – Electoral Area F Regional Parks and Trails Service Establishment Bylaw No. 1752, 2004”.	B6.1 B6.2 B6.3	Windermere Beach Regional Park Crossroad Regional Ball Park Fairmont Path

Schedule B – Regional Parks and Trails

<p>5. Regional Parks and Trails funded under "Regional District of East Kootenay - Electoral Area E Regional Parks and Trails Service Establishment Bylaw No. 1751, 2004".</p>	<p>B5.1 Avery Road Public Access B5.2 Cherry Creek Falls Regional Park B5.3 St. Mary Lake Regional Park</p>
<p>6. Regional Parks and Trails funded under "Regional District of East Kootenay – Electoral Area F Regional Parks and Trails Service Establishment Bylaw No. 1752, 2004".</p>	<p>B6.1 Windermere Beach Regional Park B6.2 Crossroad Regional Ball Park B6.3 Fairmont Path</p>
<p>7. Regional Parks and Trails funded under "Regional District of East Kootenay – Electoral Area G Regional Parks and Trails Service Establishment Bylaw No. 1753, 2004".</p>	<p>B7.1 Wilmer Community Park B7.2 Edgewater School Path</p>



**REGIONAL DISTRICT
OF EAST KOOTENAY**

Regional Park Plan

Date: 2/1/2010 Sheet: 26 of 100
File: L:\Programs\Regional Parks\2010\2010_RPP.mxd

Legend

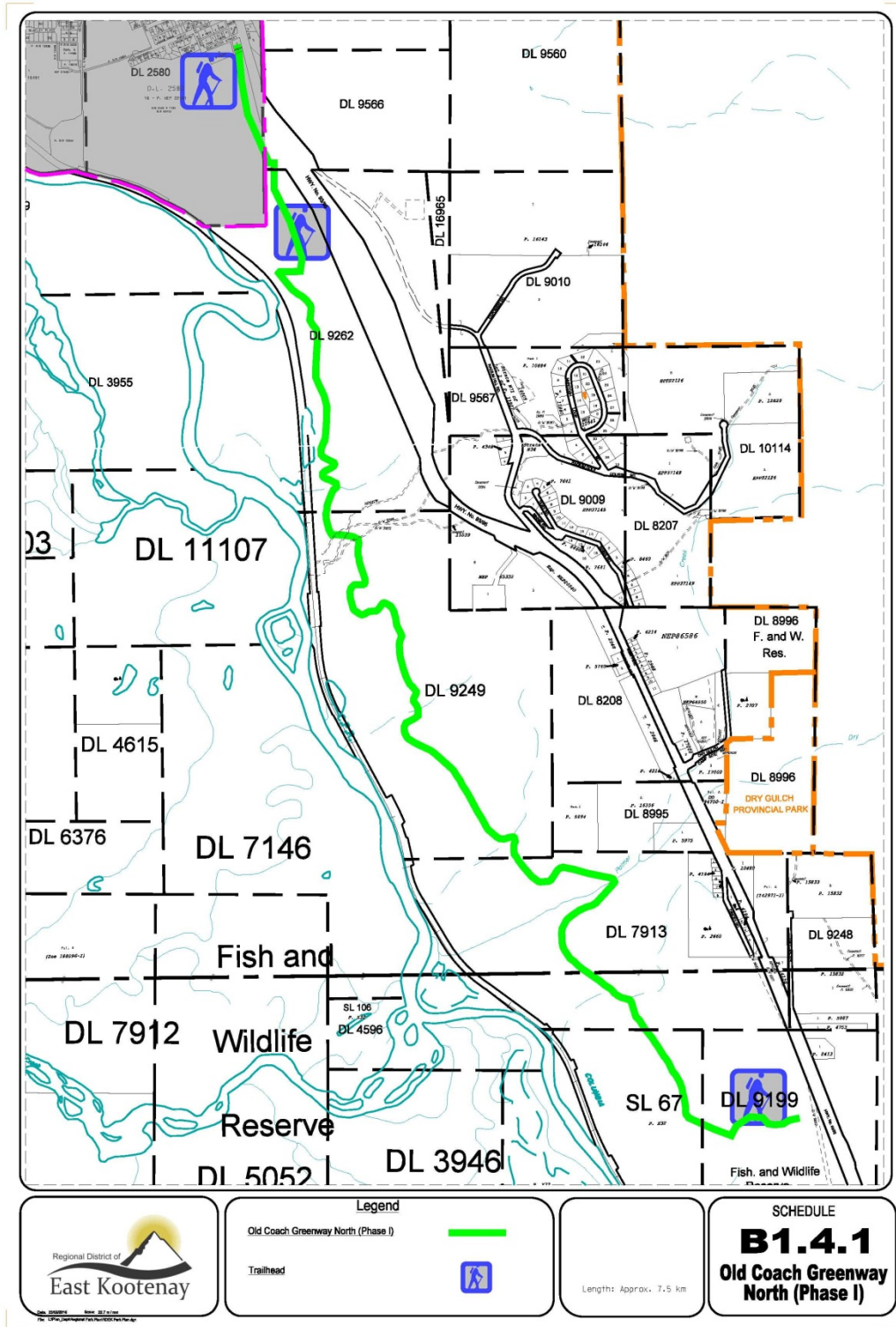
Elk Valley Regional Park

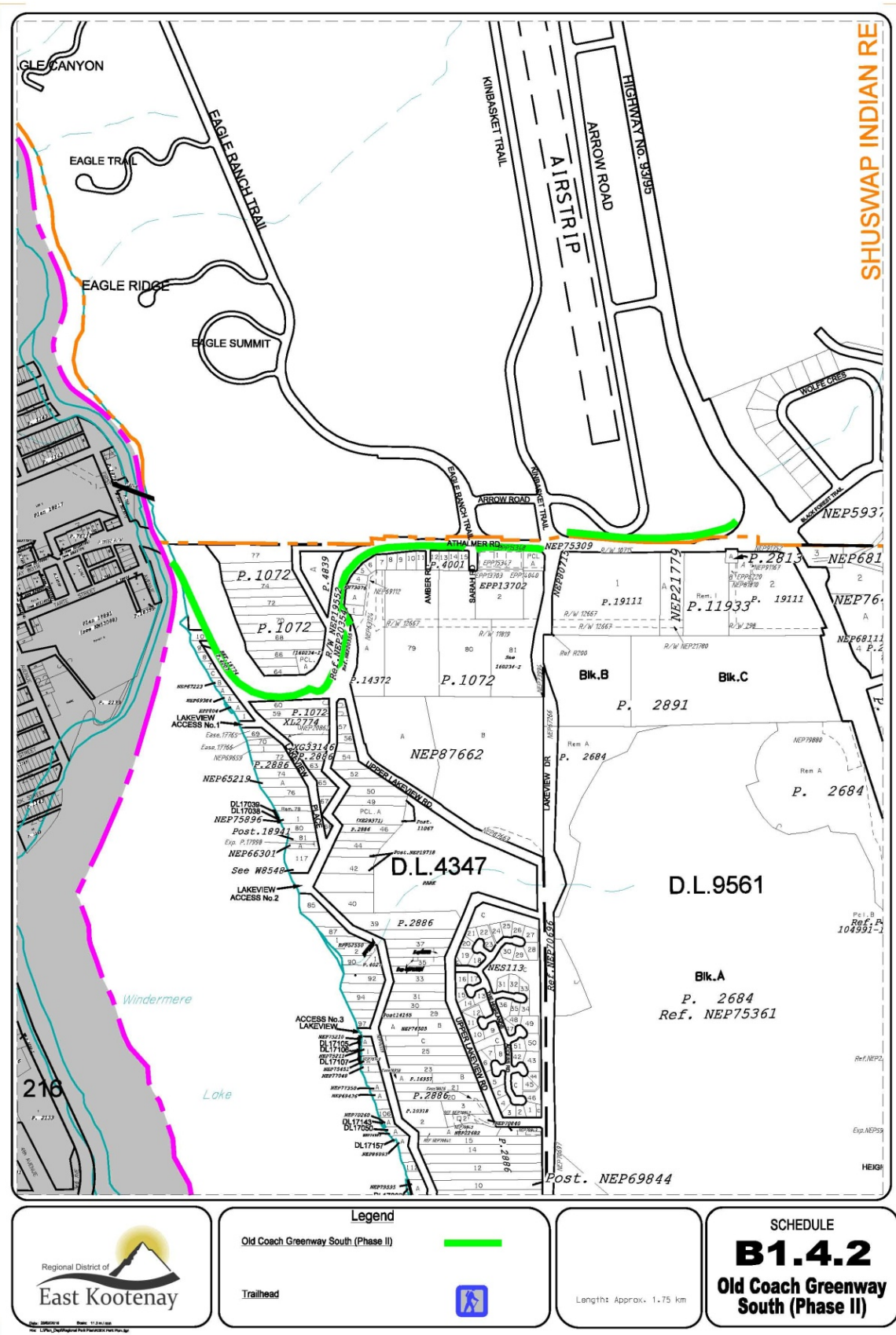
Block A Plan 17493 DL8451 and DL8452 Size: 22.3 Ha

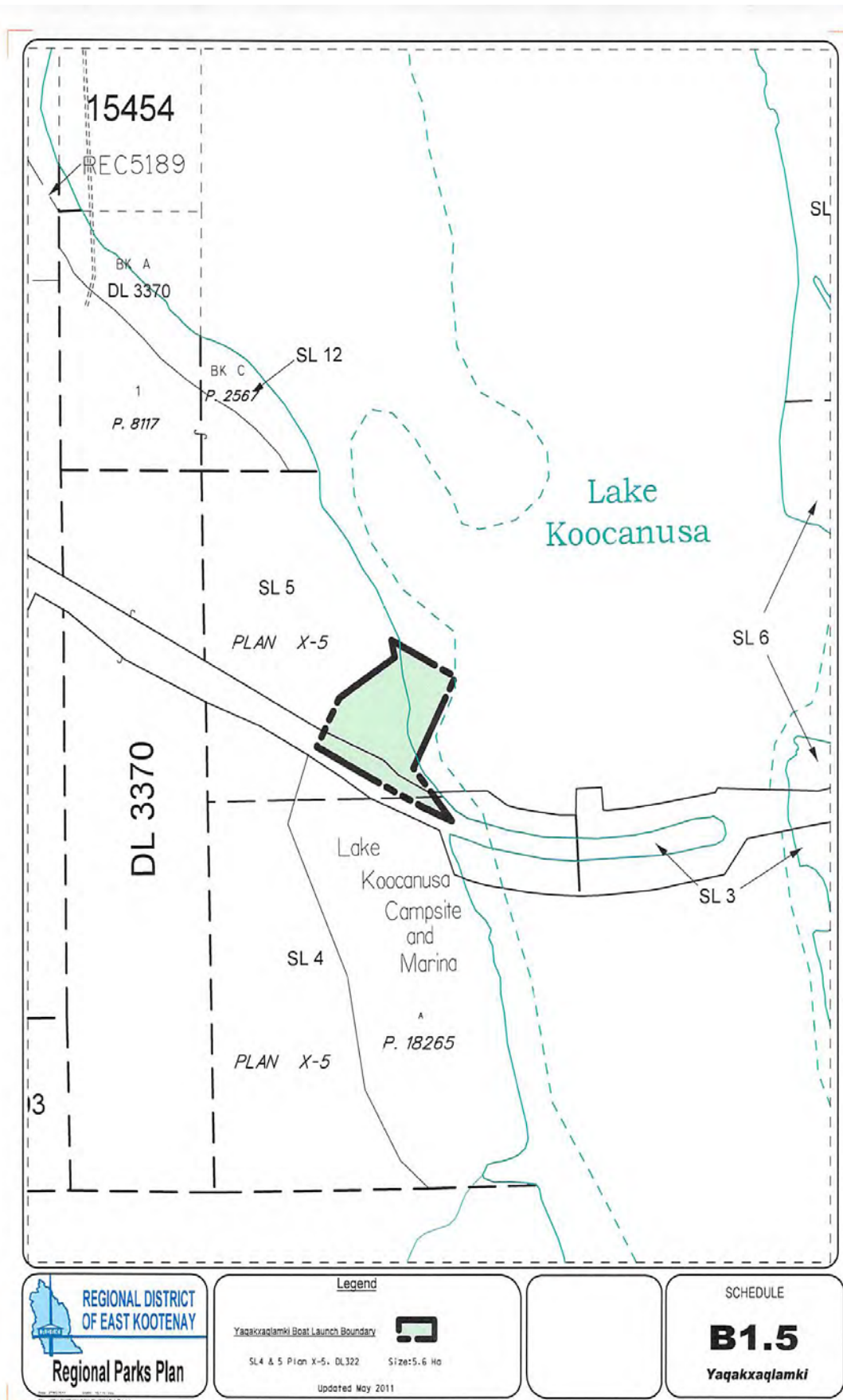
SCHEDULE

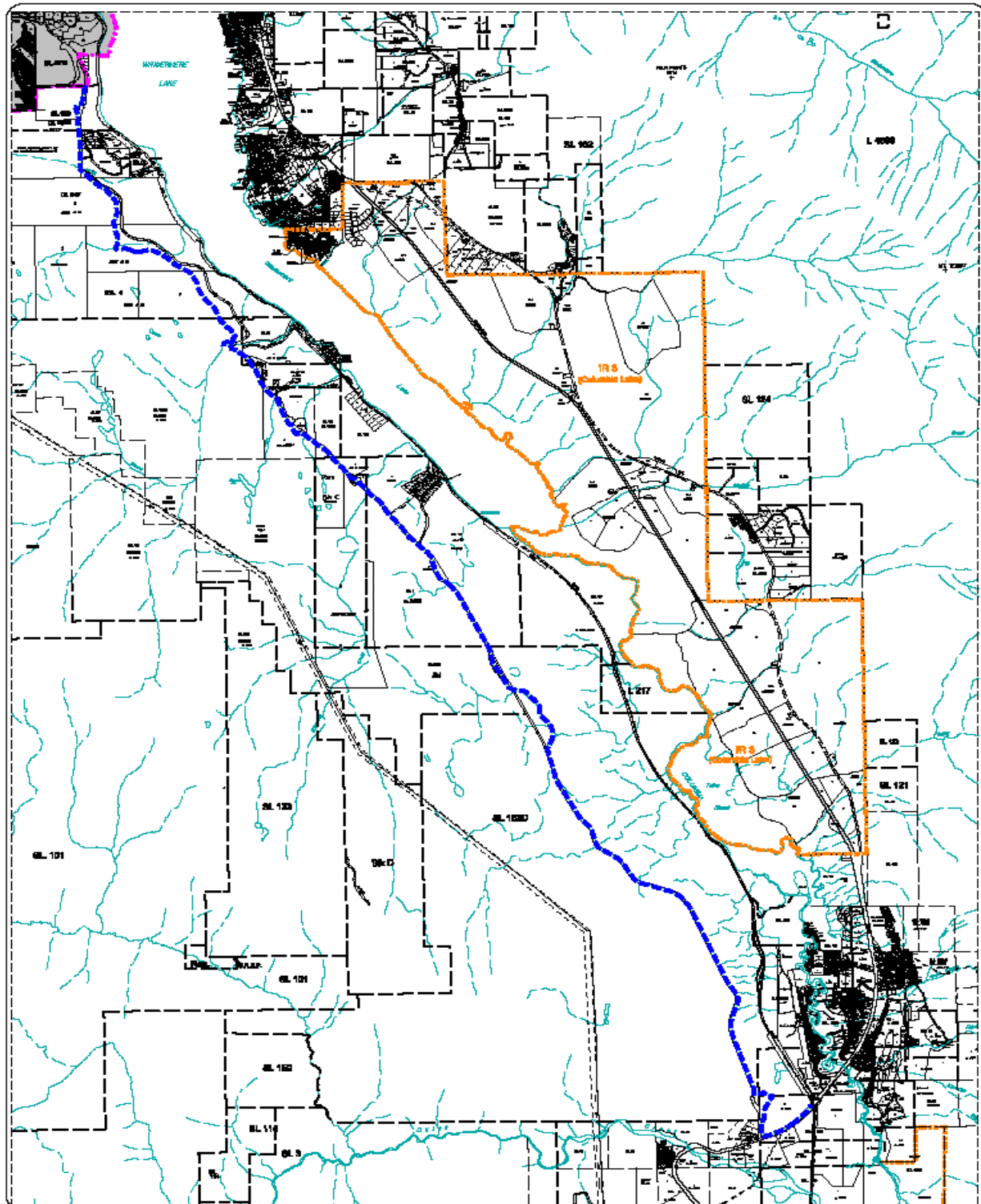
B1.1


Elk Valley Regional Park

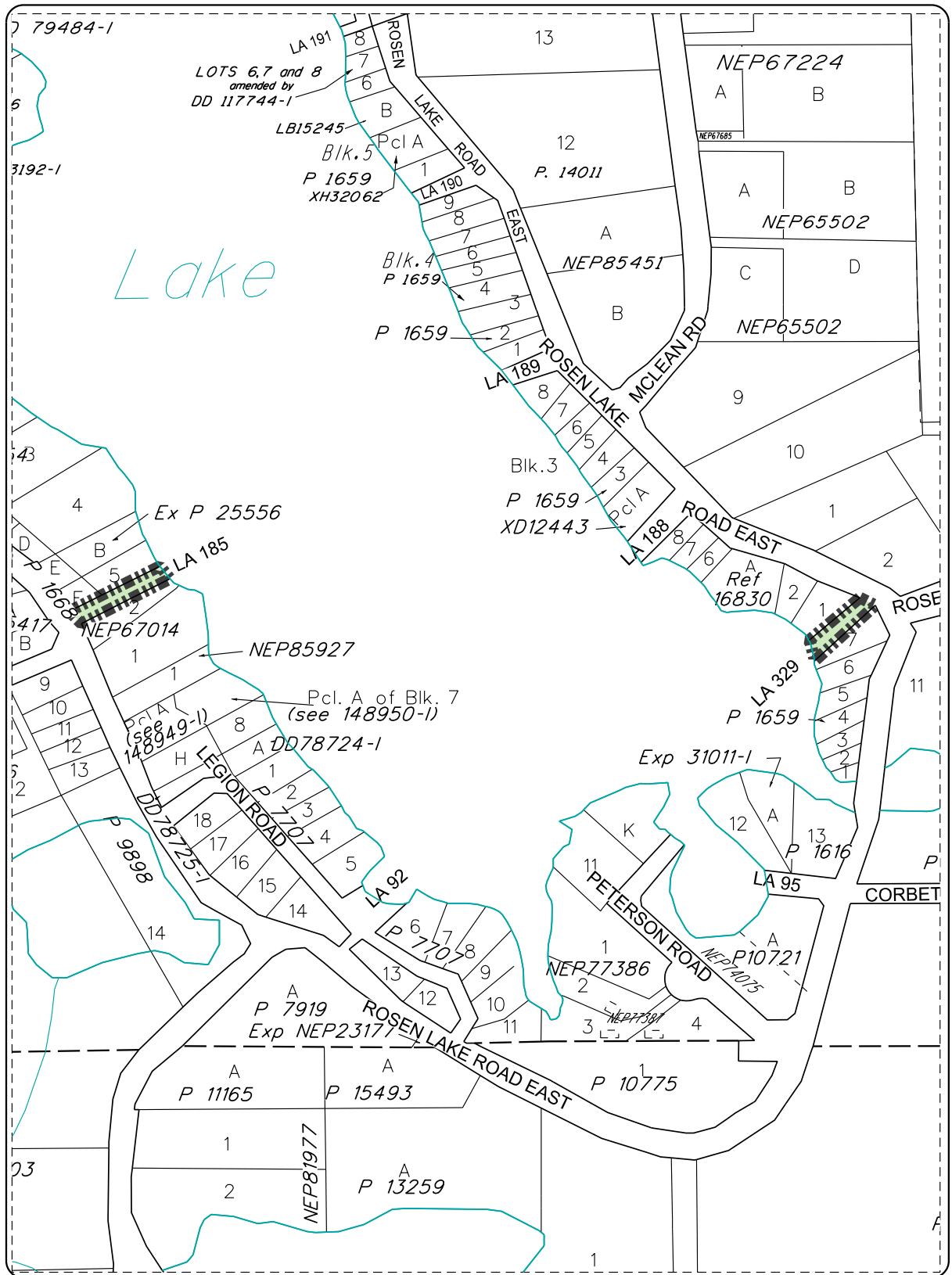










 <p>Regional District of East Kootenay</p>	<p>Legend</p> <p>Trail Corridor ---</p> <p>See RDM Plans EPP51660, 51650, 51655, 51651, 51649, 51652</p> <p>Westside Legacy Trail</p>	<p>Approx. Length 29.3km</p>	<p>SCHEDULE</p> <p>B1.6</p>
--	---	------------------------------	---



 <p>REGIONAL DISTRICT OF EAST KOOTENAY</p> <p>Regional Parks Plan</p>	<p>Legend</p> <p>Rosen Lake Public Accesses </p> <p>Legal Access 185 & 329 Size: 0.3 Ha Updated Aug 2008</p>		<p>SCHEDULE</p> <p>B3.1</p> <p>Rosen Lake Public Accesses</p>
--	--	--	---



Legend

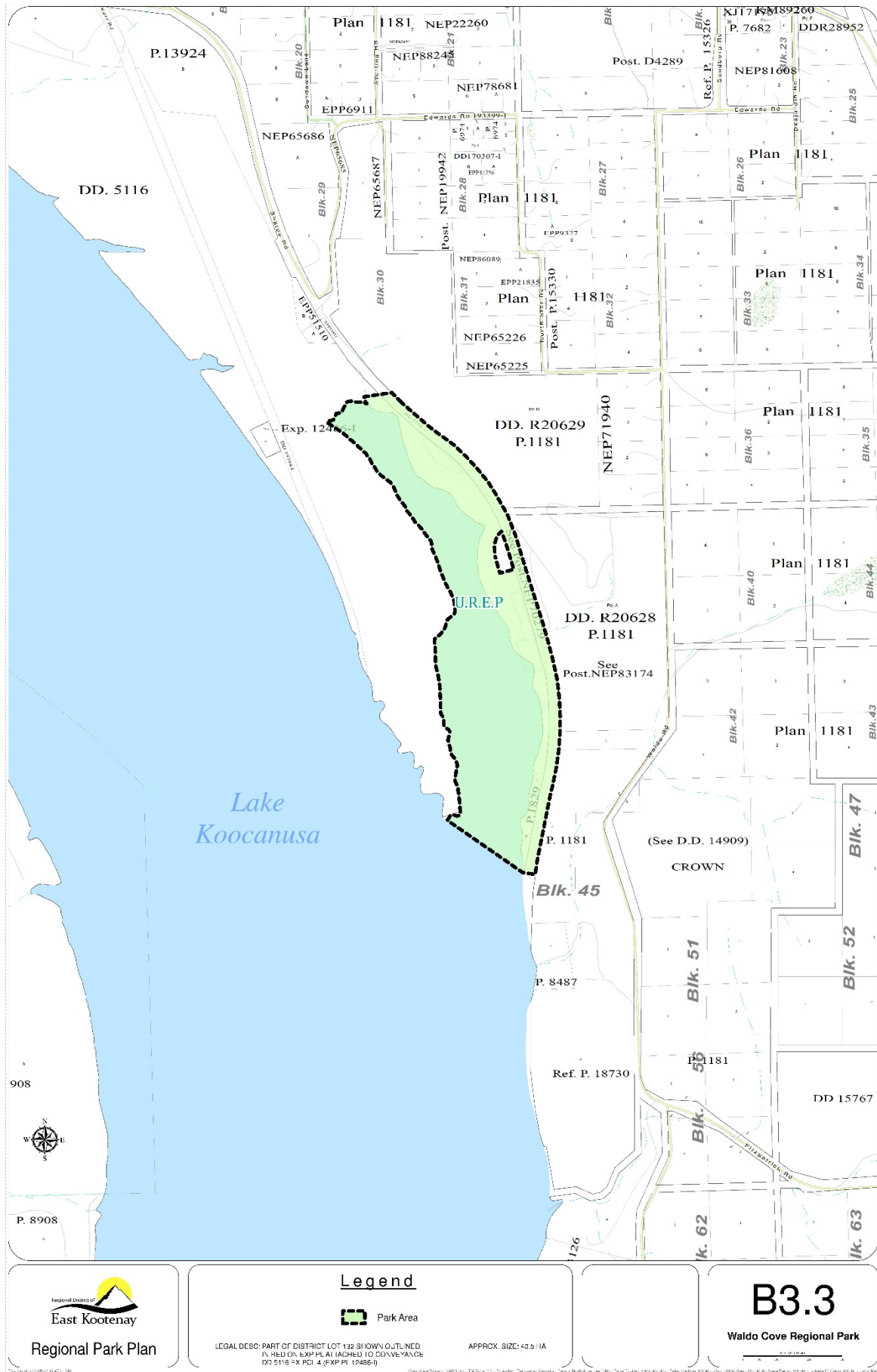
Dawson's Path

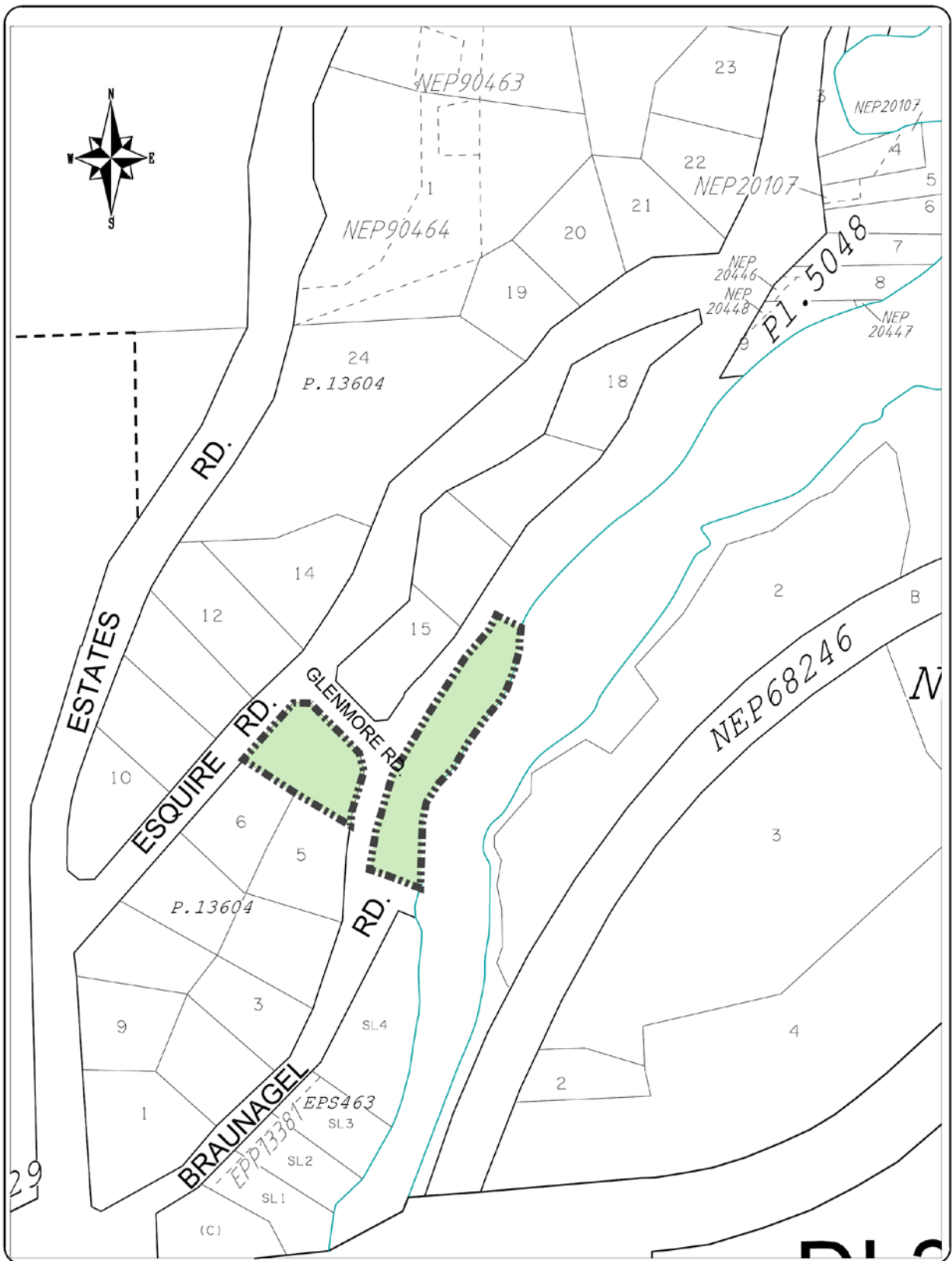
Within Jaffray-Baynes Lake Road ROW
Length 2381m



SCHEDULE

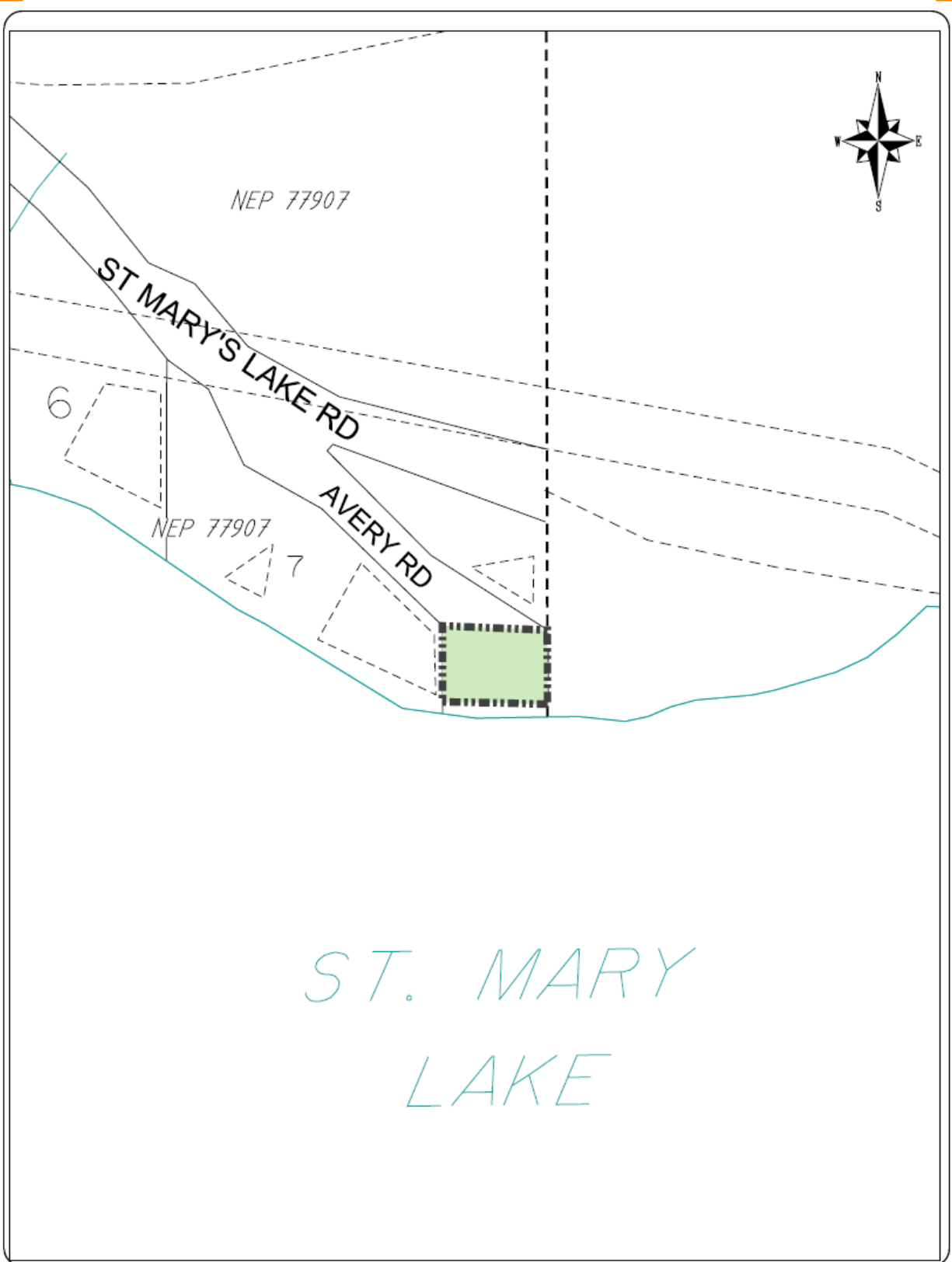
B3.2

Dawson's Path

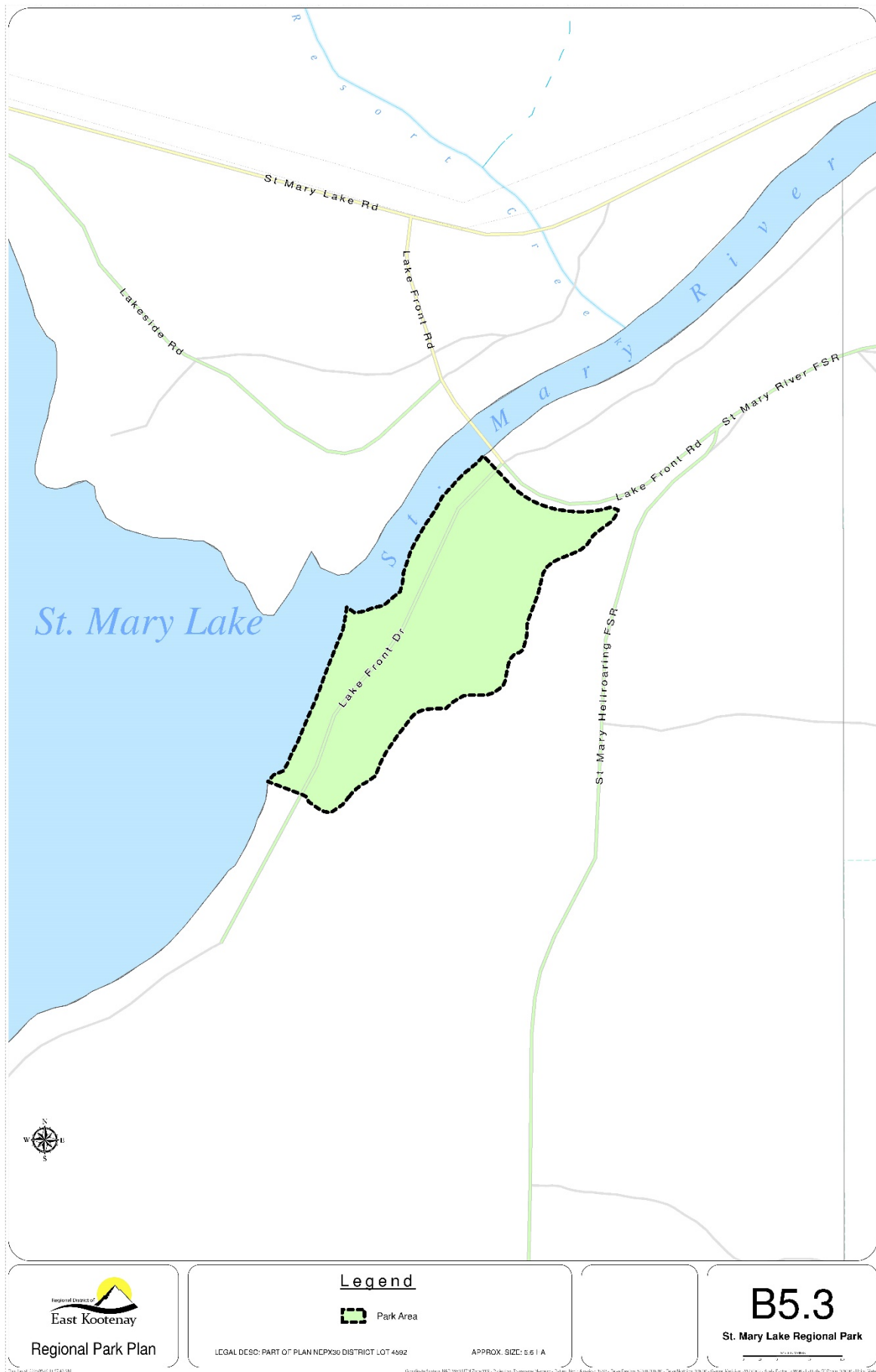




 <p>Regional Parks Plan</p>	<p>Legend</p> <p>Aldridge Regional Park </p> <p>Approximate Size: 0.68 Ha</p>		<p>SCHEDULE</p> <p>B4.1</p> <p>Aldridge Regional Park</p>
---	---	--	--



ST. MARY
LAKE





Crossroad Regional Ball Park



Part of District Rem. A Plan 2684 Size:3.15 Ha

SCHEDULE

B6.2

**Crossroad Regional
Ball Park**

[illegible]

Fairmont Path

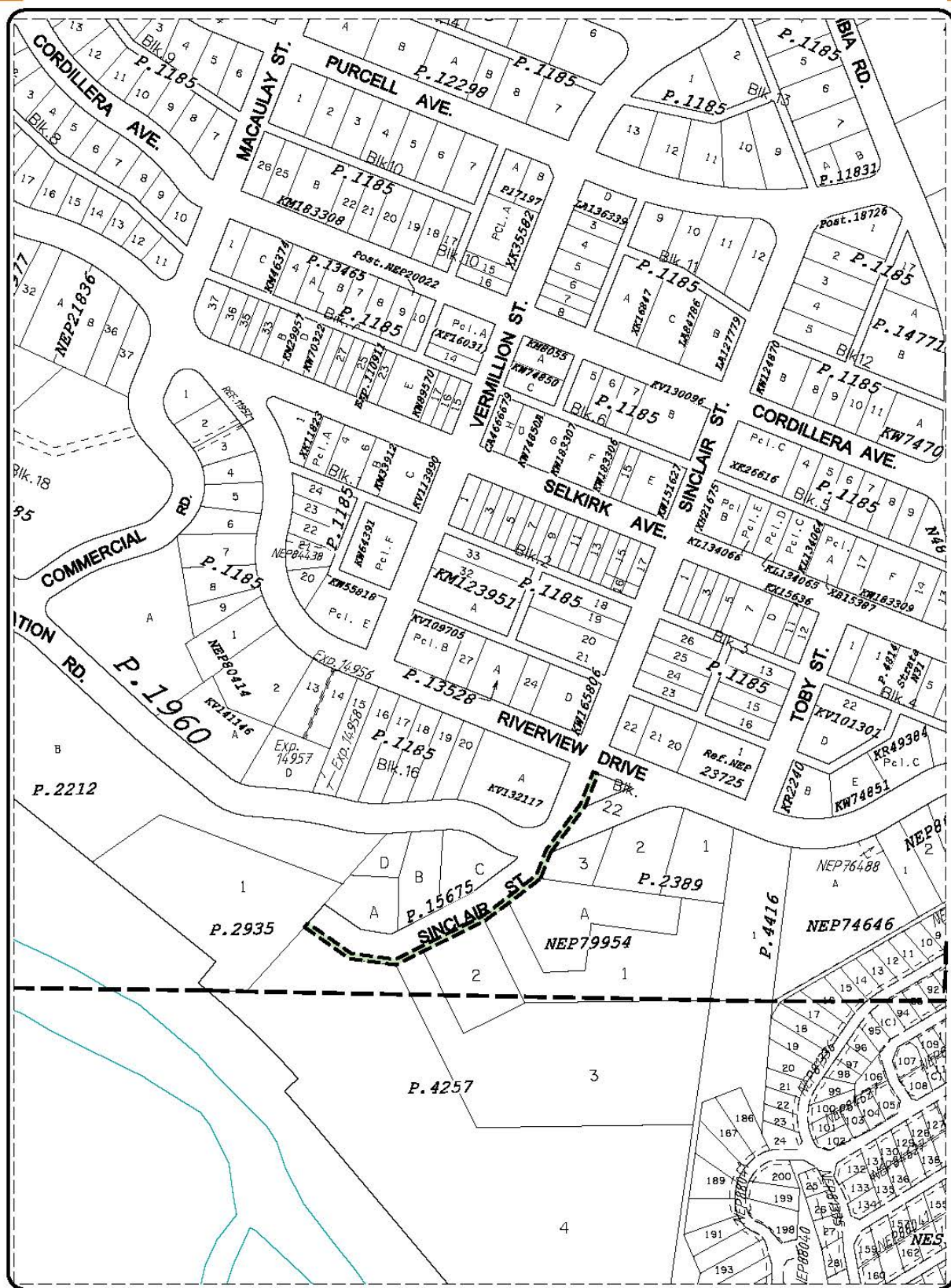
Legal Description:




Size:

B6.3

Fairmont Path



Legend

School Path 

2.5m of the southly portion of Sinclair St. ROW, for a distance of 262m (from Lat 1 of Plan 2935 to Riverview Dr.)

Edgewater School Path

Approx. Area 0.2Ac

SCHEDULE
B7.2