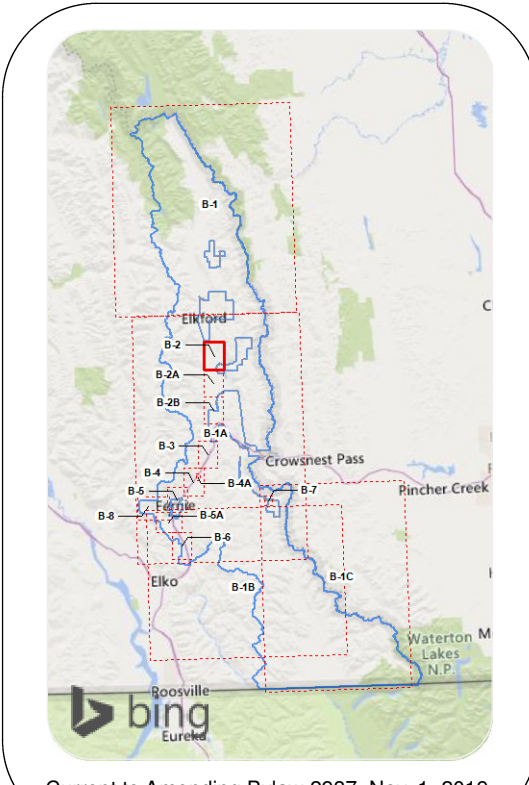


Elk Valley Consolidation
Zoning Bylaw No. 829, 1990

Legend

<p>Residential</p> <ul style="list-style-type: none"> RS-1 Single Residential (Urban) RS-1(A) Single Residential (Urban-A) RS-2 Recreation Residential RS-2A Resort Residential RS-2(B) Resort Residential (Multi-Family) RS-4 Single Residential (Extensive) RH-1 Mobile Home (Park) Residential Rural Residential RR-1 Rural Residential (Estate) RR-2 Rural Residential (Small Holding) RR-4 Rural Residential (Hobby Farm) RR-8 Rural Residential (Country) RR-60 Rural Resource 	<p>Watershed Protection</p> <ul style="list-style-type: none"> WP-1 Watershed Protection <p>Commercial</p> <ul style="list-style-type: none"> CC-4 Highway Commercial CC-6 Service Commercial CC-8 Resort Commercial CC-TP Tourist Pension Commercial <p>Industrial</p> <ul style="list-style-type: none"> MG-1 Light Industrial MG-1(A) Resort Light Industrial MG-2 Heavy Industrial MG-4 Airport Industrial 	<p>Institutional</p> <ul style="list-style-type: none"> PG-1 Community Institutional PG-2 Park and Recreation PG-3 Utility and Public Works PG-4 Resort Open Space, Recreation and Trails <p>Resort</p> <ul style="list-style-type: none"> RES-2 Resort Recreation RES-4 Resort Core
---	--	--



This is a consolidation of the Zoning Bylaw map and the adopted map amendments. The map amendment bylaws have been combined with the original Zoning Bylaw map for convenience only. This consolidation is not a legal document.

B-2
Upper Elk Valley

SCALE IN METERS
 0 100 200 400