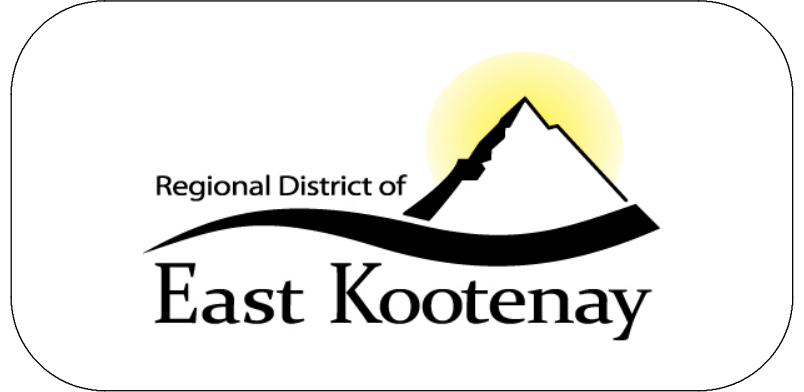


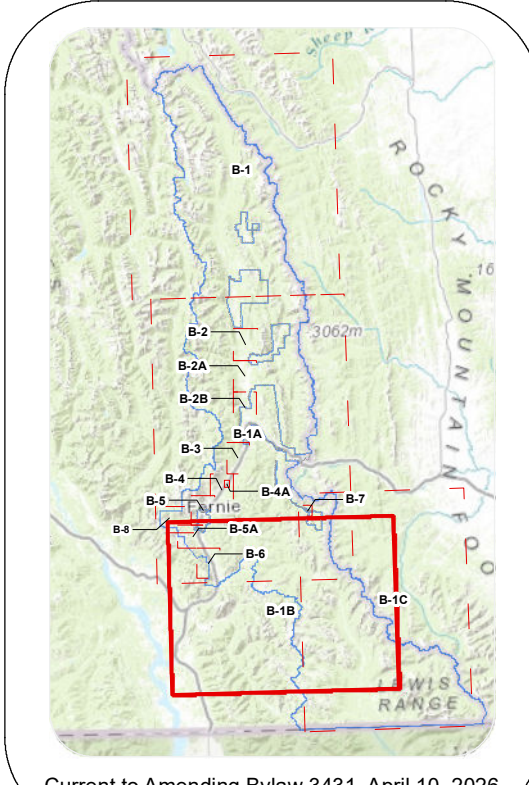
A I B E R T A



Elk Valley Consolidation
Zoning Bylaw No. 829, 1990

Legend

Residential	Watershed Protection	Institutional
RS-1 Single Residential (Urban)	WP-1 Watershed Protection	PG-1 Community Institutional
RS-1(A) Single Residential (Urban-A)		PG-2 Park and Recreation
RS-2 Recreation Residential	Commercial	PG-3 Utility and Public Works
RS-2A Resort Residential	CG-4 Highway Commercial	PG-4 Resort Open Space, Recreation and Trails
RS-2(B) Resort Residential (Multi-Family)	CG-6 Service Commercial	REC-1 Recreation
RS-4 Single Residential (Extensive)	CC-4 Resort Commercial	
RH-1 Mobile Home (Park) Residential	CG-TP Tourist Pension Commercial	Resort
Rural Residential		RES-2 Resort Recreation
RR-1 Rural Residential (Estate)	Industrial	REC-2 Resort Core
RR-2 Rural Residential (Small Holding)	MG-1 Light Industrial	
RR-4 Rural Residential (Hobby Farm)	MG-1(A) Resort Light Industrial	
RR-8 Rural Residential (Country)	MG-2 Heavy Industrial	
RR-60 Rural Resource	MG-4 Airport Industrial	
		— Plan Area Boundary



Current to Amending Bylaw 3431, April 10, 2026
 Schedule creation date: 2026-05-04

This is a consolidation of the Zoning Bylaw map and the adopted map amendments. The map amendment bylaws have been combined with the original Zoning Bylaw map for convenience only. This consolidation is not a legal document.

B-1B
Overview - Morrissey Ridge

