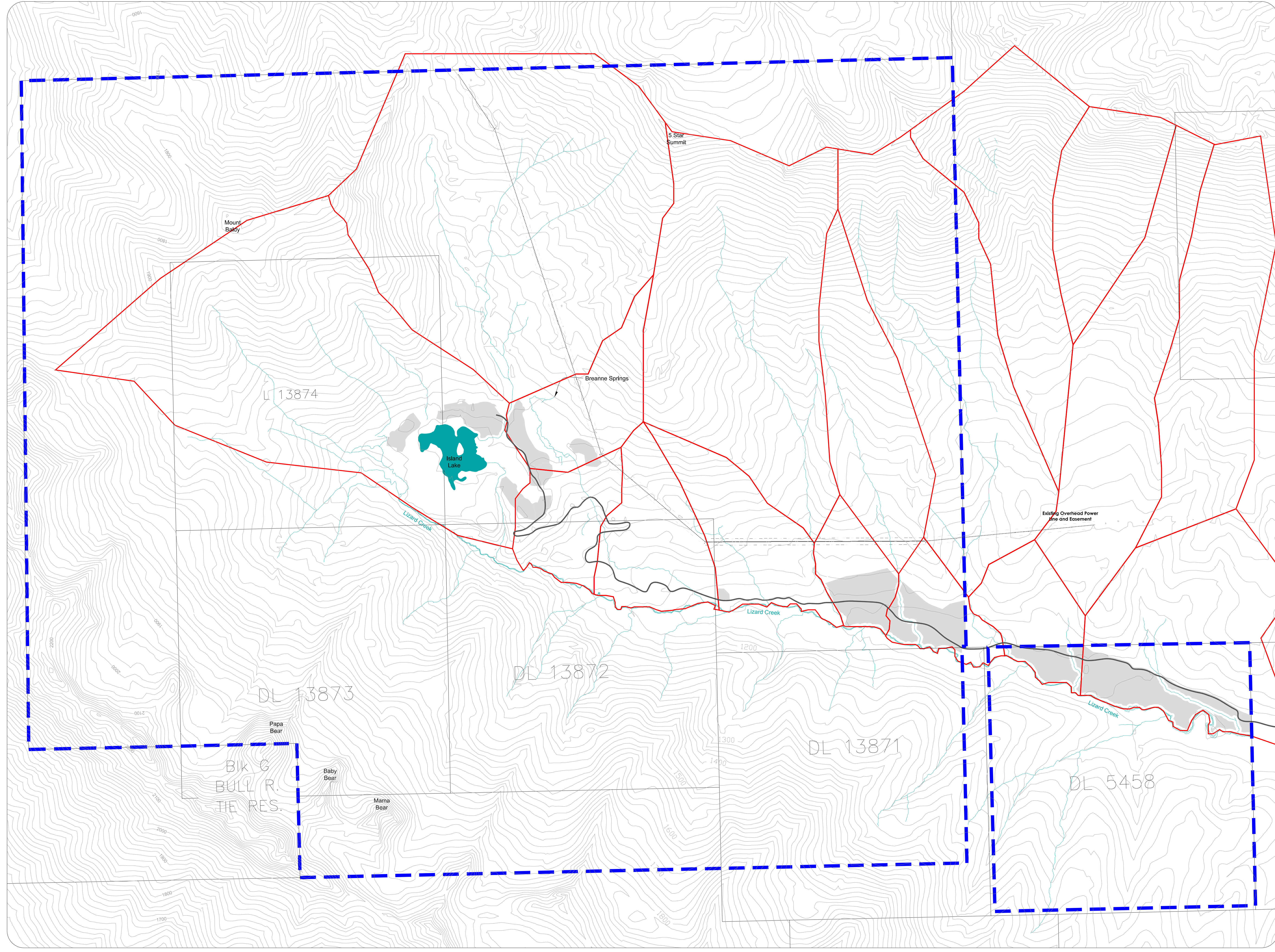


Legend

- Plan Area Boundary ▬▬▬
- Existing Access Road ▬
- Existing Overhead Power Line - - - - -
- Basin Boundary ▬
- Existing Hydrology ▬
- Proposed Development Area

Note: Basins are derived from Trim mapping data and final basin details are subject to detailed site surveys.

SCALE IN METERS
 0 100 400 600 800



For office use:

This is Schedule I of Bylaw No. 2170 cited as
 "Regional District of East Kootenay - Island
 Lake Official Community Plan Bylaw No.
 2170, 2009"

"David Wilks"
 Chair

"L.V Crane" May 7, 2010
 Corporate Officer Date

SCHEDULE
13
 Drainage Catchment
 Areas