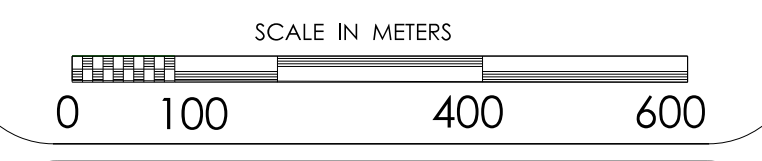


**Legend**

- Plan Area Boundary —■—■—
- Existing Access Road —
- Existing Overhead Power Line - - -
- Existing Hydrology —
- Sanitary Line (Gravity) →
- Sanitary Line (Forcemain) →
- Treatment Station □
- Sanitary Lift Station ■
- Proposed Development Area ■

Note: Final sizing, layout, and treatment plant location subject to detailed engineering design.



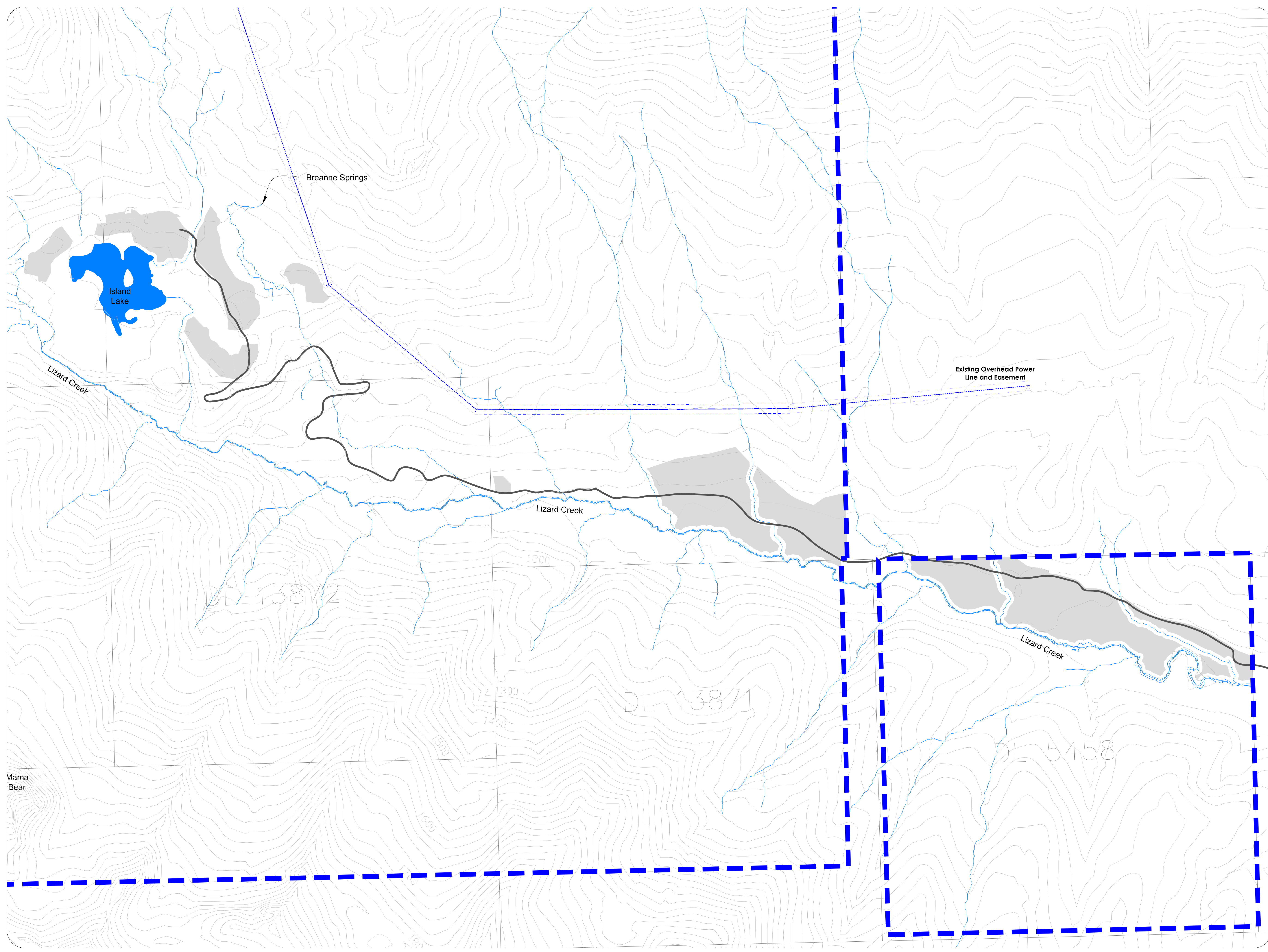
For office use:

This is Schedule 12 of Bylaw No. 2170 cited as "Regional District of East Kootenay – Island Lake Resort Official Community Plan Bylaw No. 2170, 2009"

"David Wilks"  
Chair

"L.V Crane" May 7, 2010  
Corporate Officer Date

SCHEDULE  
**12**  
Sanitary Sewer Collection  
and Treatment



Mama Bear