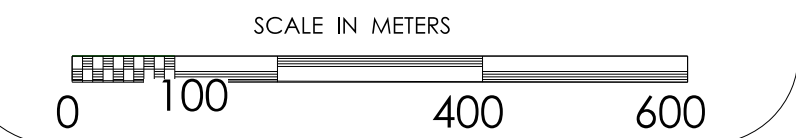


Island Lake Resort
Official Community
Plan Bylaw No. 2170

Legend

- Plan Area Boundary —■—■—
- Existing Access Road —
- Existing Overhead Power Line - - - - -
- Existing Hydrology —
- Raw Water Supply - - - - -
- Treated Water Supply —
- Treated Water Distribution —
- Treated Water Reservoir ⊠
- Pressure Reducing Valve ⊗
- Proposed Development Area ■

Note: Well location subject to well exploration program, treated water reservoir and treatment plant location subject to detailed engineering design.



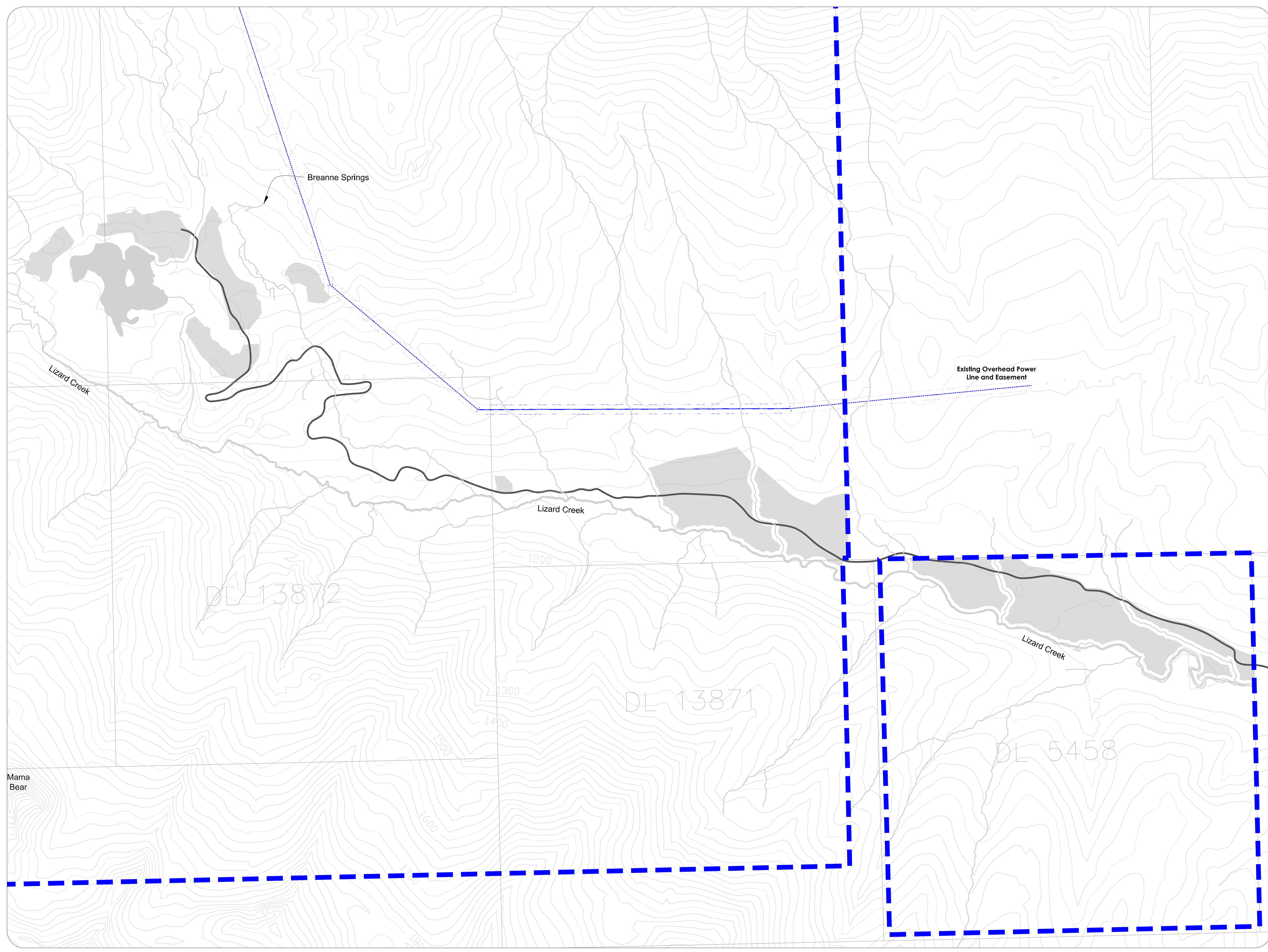
For office use:

This is Schedule 11 of Bylaw No. 2170 cited as "Regional District of East Kootenay – Island Lake Resort Official Community Plan Bylaw No. 2170, 2009"

"David Wilks"
Chair

"L.V Crane" May 7, 2010
Corporate Officer Date

SCHEDULE
11
Water Supply System



Mama Bear